

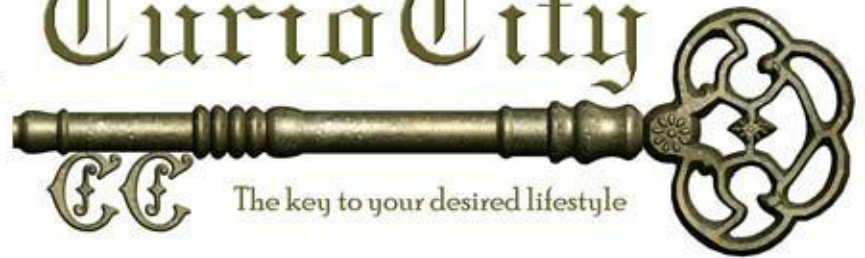


**510
EARTH**

TOP PROPERTY | BEST DEALS



Curio City



CC

The key to your desired lifestyle

Contents

Elevation	01
Welcome	03
Location	04
Amenities & Specifications	05
Automation	11
Green Initiative	14
Layout	15
Floor Plans	16
Roof Plans	21
Basement Layout	22

The key to your desired lifestyle



**510
EARTH**

TOP PROPERTY | BEST DEALS

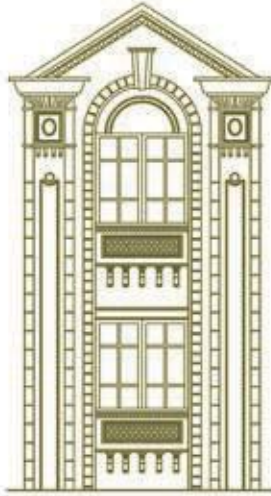




**510
EARTH**

TOP PROPERTY | BEST DEALS





Welcome

to your dream home. Flow freely from nostalgia to future. Enjoy the luxury of ultra-urban lifestyle in full harmony with nature. Indulge in the lavish provisions for your leisure. Taste the elegance of architecture from the days of the Raj. Live your life king-size in CurioCity.



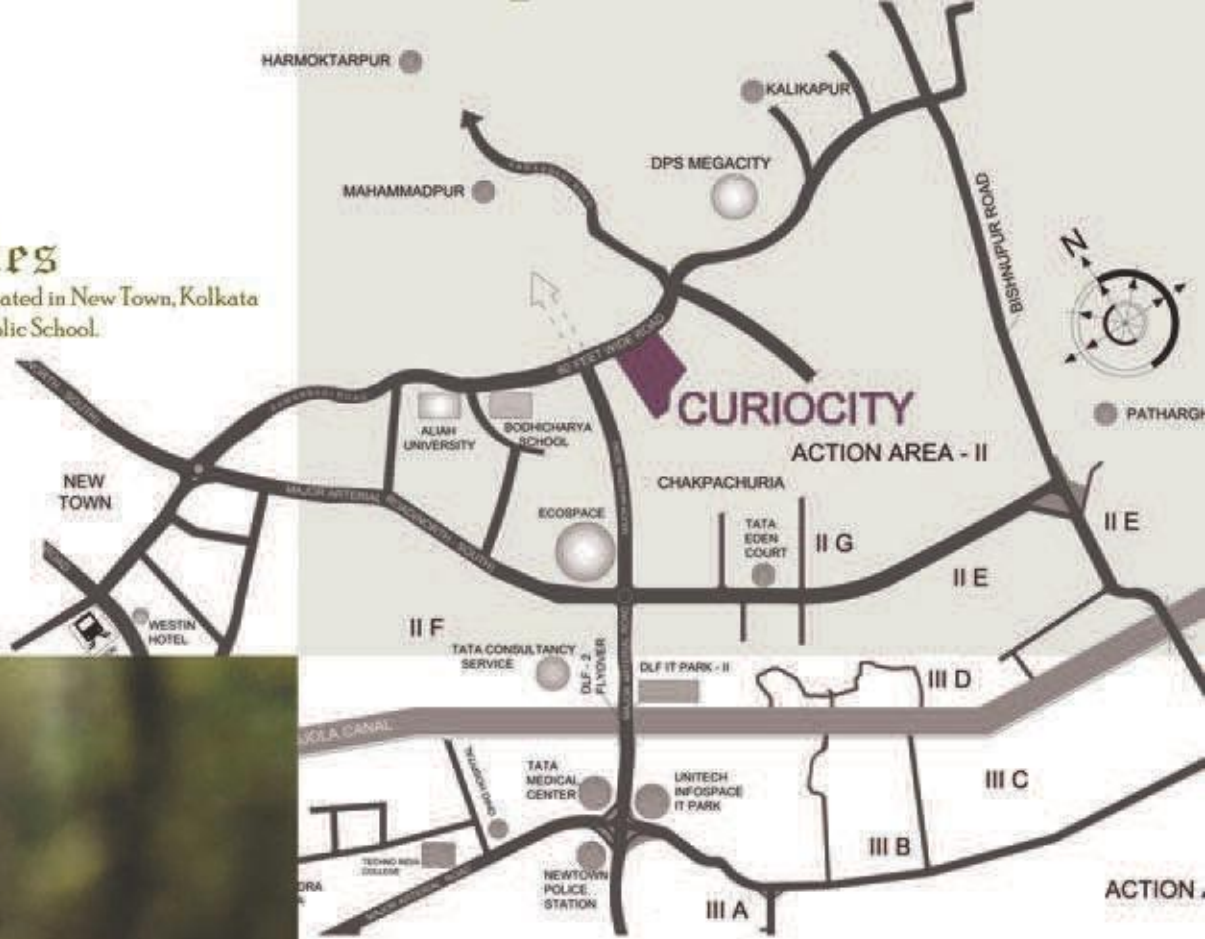


**510
EARTH**

TOP PROPERTY | BEST DEALS

Just 5 minutes

drive from the International Airport, it's located in New Town, Kolkata beside Tata Medical Centre and Delhi Public School.



Distance:

Professional School & College: 300 m

Hospital: 1 km

Multiplex and Mall: 1 km

Easy access to Express Highway

Beside SEZ (Special Economic Zone)



**510
EARTH**

TOP PROPERTY | BEST DEALS



Landscaped Greenery | Two Tier Terrace
Moulded Sculptures | Stone paved Garden Walks
Stylish Footlights | Screened Gazebos
Designer Lawn Seats | Badminton Court





**510
EARTH**

TOP PROPERTY | BEST DEALS

Wit

the lease of leisure. Spend the precious moments of your spare time in the majestic surroundings of the royal garden.





**510
EARTH**

TOP PROPERTY | BEST DEALS



Relax

in your own courtyard where water meets the sun. Taste the tranquility of life.



**510
EARTH**

TOP PROPERTY | BEST DEALS



Recreational Pool | Hanging Deck
Stone or Wooden Surface Patio
Roof Top Garden | Mini Theatre
Gymnasium | Aerobics Hall
Community Hall | Gazebos
Indoor Games room





**510
EARTH**

TOP PROPERTY | BEST DEALS

Enjoy

the elegance of ornate design combined with the conveniences of contemporary lifestyle



Living ~ room

- Imported vitrified flooring
- Wall Putty/Gypsum finish for wall and ceilings
- Telephone and TV connections

Terrace

- Landscaped with flower beds

Kitchens

- International-style kitchen with hob and chimney
- Water purifier



Bedroom

- Vitrified flooring
- Air-conditioning

Bathroom

- Vitrified/Ceramic flooring
- Wash basin with counter
- Finest quality fitting and sanitary wear
- Designer dado

100% generator back-up



**510
EARTH**

TOP PROPERTY | BEST DEALS

Realtech

can create even more automation wonders for you, at an extra cost. A sneak preview:

. With multi-room audio and video distribution, keep all equipments – CD/DVD player, radio receiver, a/v servers or cable/satellite dish receivers at one location, yet play the equipment from any room.

. Save energy with intelligently installed presence sensors, dimmers & AC controls that judge the requirement and occupancy of a room.

. Curtain controls will open or draw the curtains at the flick of a finger, changing the mood and light your room.

. Your terrace garden will be watered depending on existing moisture in the soil.



State of the art

home automation will entice you with the unbeatable ease of a hassle-free lifestyle at CurioCity. You may be incredibly tech savvy or completely tech-phobic, but please don't bother. You'll fall in love with the easy-to-operate automatic devices installed by Realtech.

Automated Apartment Management Systems with touch screens and remote controls will put you in charge of every gadget with just finger commands. You can watch over your entire house from centrally located LCD touch panels or via remote controls.

Security concerns are a thing of the past. With access control in the lift lobby and video security, you and your family are completely safe.





**510
EARTH**

TOP PROPERTY | BEST DEALS

Rely

on the internal safety and surveillance measures of the enclosure and connect with the world at your ease





**510
EARTH**

TOP PROPERTY | BEST DEALS



Live

in harmony with nature. Keep in touch with the elements of the earth. Breathe the warmth of well being.



**510
EARTH**

TOP PROPERTY | BEST DEALS

Green initiatives:

- . Heat and ventilation studies undertaken at the design stage
- . Architectural design that ensures good ventilation and the maximum use of natural lighting
- . Use of home automation that senses occupancy in a room and regulates lighting and air-conditioning
- . Use of energy-efficient CFL light fixtures
- . Large areas of landscaping throughout the project, ensuring plants are of indigenous and drought-tolerant species
- . Fully utilizing re-cycled water for flushing and landscaping
- . Segregation of organic waste via Vermiculture
- . Efficient irrigation systems

Global

warming is the burning environmental question of our time. We all have a very immediate responsibility to the planet. Living in CurioCity makes it much easier to limit your carbon footprint.

Even if you're not actively saving the earth, Realtech's technology, good practices and core values ensure that you live a sustainable lifestyle. To Realtech, a safe and healthy environment goes beyond acquiring ratings and certifications.

Commitment to the planet and a sustainable lifestyle has become a core value of the company and as such, every project moves forward in this regard - improving specifications, adding initiatives.





**510
EARTH**

TOP PROPERTY | BEST DEALS

Ground Floor Plan

Ground Floor Showroom & Floor Plan Area

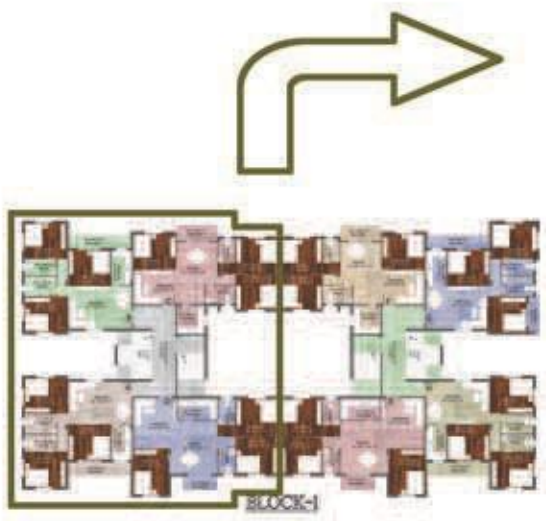
- 1 = 1240 SFT
- 2 = 1262 SFT
- 3 = 1262 SFT
- 4 = 1240 SFT
- B = 1323 SFT
- C = 1398 SFT
- F = 1398 SFT
- G = 1398 SFT
- I = 1184 SFT



Block-1 Typical Floor Plan Area

- A = 1332 SFT
- B = 1323 SFT
- C = 1398 SFT
- D = 1502 SFT

Typical Floor Plan of Block-1

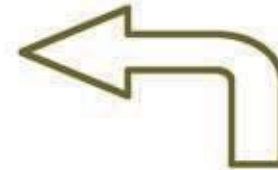




Typical Floor Plan of Block-1

Block-1 Typical Floor Plan Area

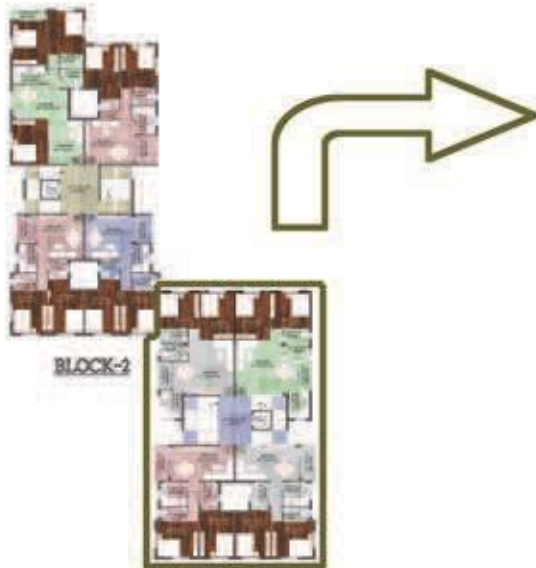
- E = 1502 SFT
- F = 1398 SFT
- G = 1356 SFT
- H = 1332 SFT



Block-2 Typical Floor Plan Area

- I = 1016 SFT
- J = 1018 SFT
- K = 1018 SFT
- L = 1016 SFT

Typical Floor Plan of Block-2





Typical Floor Plan of Block-2



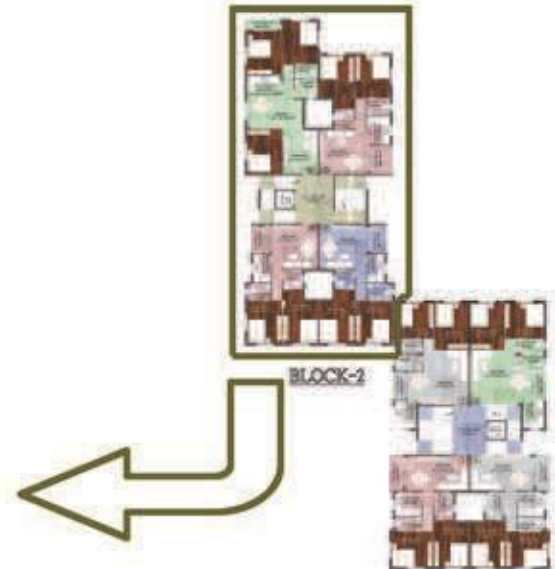
Block-2 Typical Floor Plan Area

M = 980 SFT

N = 1324 SFT

O = 1022 SFT

P = 984 SFT



Roof Plan of Block-1 & Block-2



**510
EARTH**

TOP PROPERTY | BEST DEALS





**510
EARTH**

TOP PROPERTY | BEST DEALS

Basement Plan

Basement Showroom Area & Parking

- 1 = 1240 SFT
- 2 = 1337 SFT
- 3 = 1337 SFT
- 4 = 1240 SFT





**510
EARTH**

TOP PROPERTY | BEST DEALS



Developer -



MARKETED BY:



www.510earth.com

Stesalit Towers, Office #7, 4th floor Plot No E2-3,
Block - EP & GP, Sector V, Salt Lake,
Kolkata - 700091

Contact No: +91-9073338396